

# NOT PERMITTED

- Swimming*
- Camping*
- Fires/fireworks/explosives*
- Cooking/grilling*
- Hunting/keeping wildlife*
- Alcohol*
- Weapons/firearms*
- Metal detection devices*
- Solicitation*
- Fishing without license*
- Pets without a leash*
- Bikes/horses on the walking trail*
- Picnicking outside picnic area*
- Motorized boating*



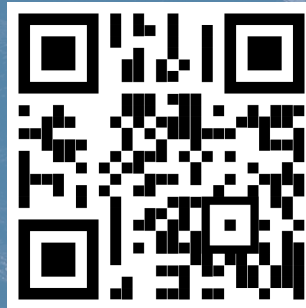
questions?

McClellan Development Authority

4975 Bains Gap Rd, Anniston, AL 36205

(256) 236-2011

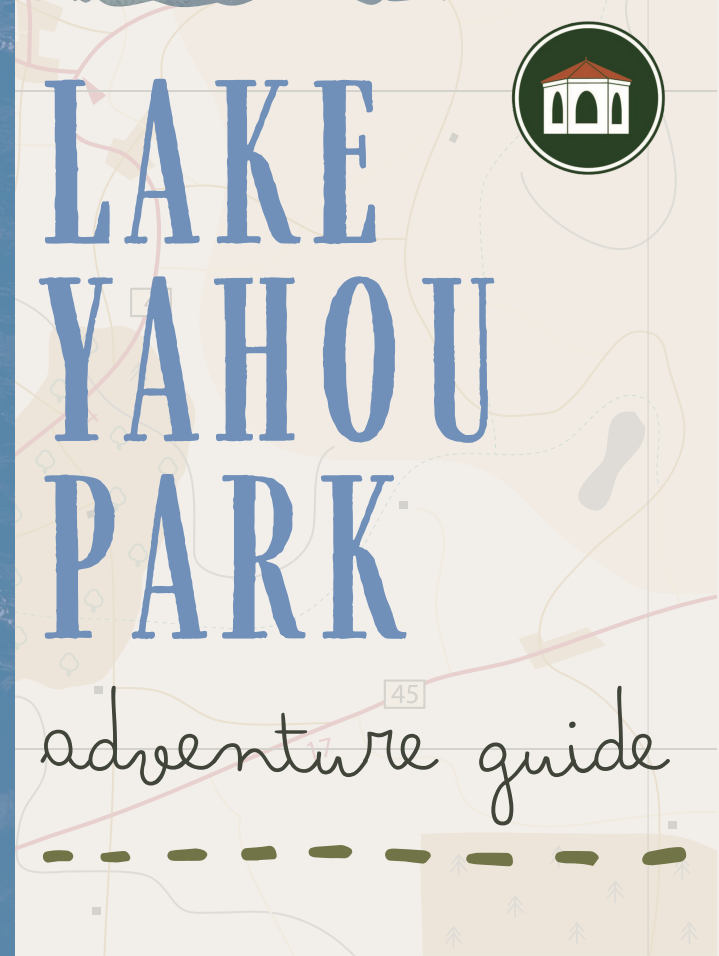
[www.exploremcclellan.com](http://www.exploremcclellan.com)



SCAN FOR FULL  
RULES & REGULATIONS

#ExploreMcClellan #LakeYahouPark

#McClellanTrails #AdventureAwaits





# FAQs



## WHEN IS THE PARK OPEN?

The park is open 7 days a week, with seasonal hours. Between October and March, LYP is open 6 AM - 5 PM; between April and September, LYP is open 6 AM - 7:30 PM.

## DO I HAVE TO PAY TO USE THE PARK?

The park is free for all visitors; however, visitors are required to purchase a \$5 MDA fishing license to fish in the lake.

## WHERE CAN I GET MY FISHING LICENSE?

Licenses can be purchased at the MDA Office at 4975 Bains Gap Rd, with a valid driver's license.

## IS A STATE FISHING LICENSE REQUIRED?

No, the MDA owns the property and has opened it to the community.

## DO MY KIDS / GRANDKIDS NEED FISHING LICENSES?

Anyone under the age of 16 only needs to be accompanied by someone with an MDA fishing license in order to fish at LYP.

## ARE TROLLING MOTORS ALLOWED IN THE LAKE?

No, no motorized water vehicles are allowed in the water.

## WHO DO I CONTACT ABOUT PARK / TRAIL MAINTENANCE?

For maintenance and clean-up, call the MDA at (256) 236-2011.

# LAKE YAHOU PARK

Once a popular military hangout, the beautiful 8-acre Yahou Lake closed with Fort McClellan in 1999, leaving it unused by the community for more than 20 years.

In 2016, the McClellan Development Authority began the process of redeveloping Lake Yahou and the surrounding area into a scenic, outdoor recreation park — draining the lake, repairing the dam, and reseeding the lakebed.

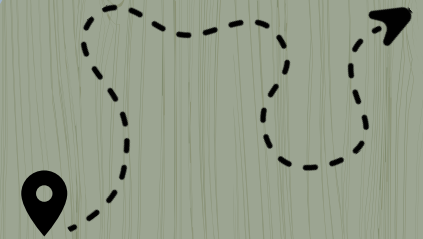
In 2019, the MDA restocked Lake Yahou with hundreds of fish, including large-mouth bass, copperhead bluegill, and fathead minnow.

In 2021, the park concept was drawn up, featuring a picnic area, walking trail, and access to the multi-use trails.

In May 2022, Lake Yahou Park officially opened to the public in time for hundreds of Memorial Day Weekend visitors.



SCAN FOR TRAIL MAP



## MULTI-USE TRAILS

McClellan's Multi-Use Trails include the first Phase I trails in Alabama built specifically for the National Interscholastic Cycling Association.

There are a total of three phases of difficulty across 17 miles of forested trails, making them an exciting challenge for any age or experience level.

McClellan's Multi-Use Trails are open the same hours and seasons as Lake Yahou Park, and are suitable for biking, hiking, walking, or running. The trails can be accessed via BG DH Stem Ave or from Lake Yahou Park.